

DSH^{plus} Installation Guide



 **FLUIDON**

Simulieren - Analysieren - Umsetzen

Copyright © 1995-2019 by

FLUIDON Gesellschaft für Fluidtechnik mbH
Jülicher Straße 338a
52070 Aachen
Tel. +49 (0) 241 - 9 60 92 60
Fax +49 (0) 241 - 9 60 92 62
Email info@fluidon.com
www.fluidon.com

No part of the installation guide may be reproduced, duplicated or distributed in any form (printing, photo print etc.) without permission of the FLUIDON GmbH.

The soft- and hardware names mentioned in this manual are in the most cases trademarks and are subject to the legal determination as such ones.

In the course of further development of the software, parts of this installation guide can lose their validity.

Installation Guide for DSHplus 3.10	3
Program Installation	3
Licence Installation	7
Quick Check whether the Installation was Successful	11
Checking the Licence Content.....	13
Changing the Licence File.....	14
Installing Dongle Drivers Manually	15

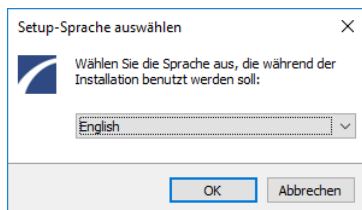
Release 3.10 September 2019

Installation Guide for DSHplus 3.10

Program Installation

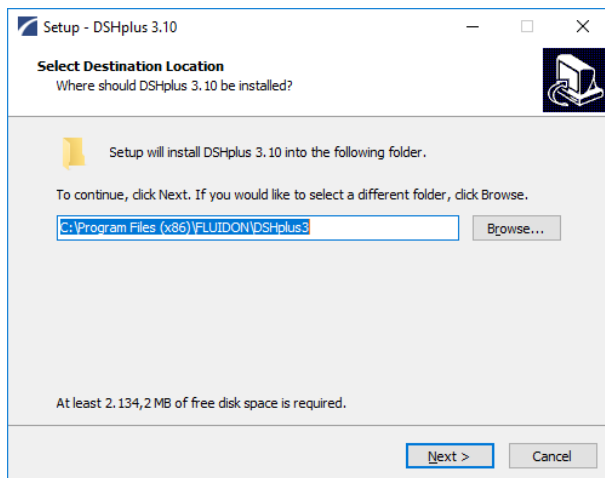
Start the downloaded DSHplus installation file.

Select Setup language

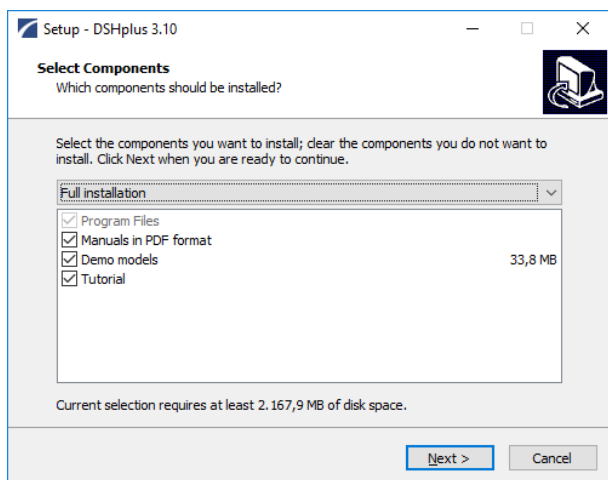


On English operation systems the language of this initial message will be in English.

Select Destination Location

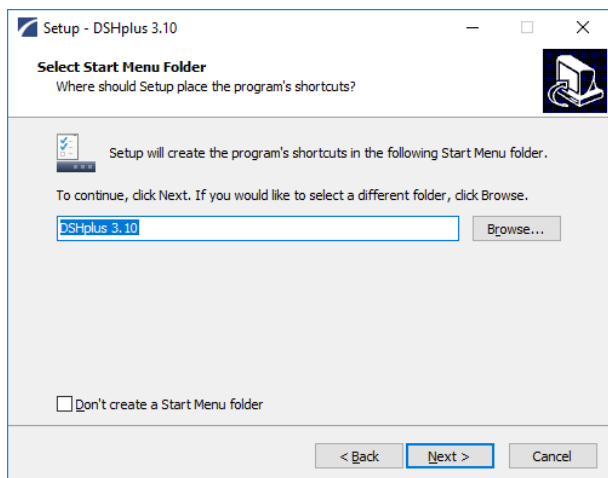


Select Components

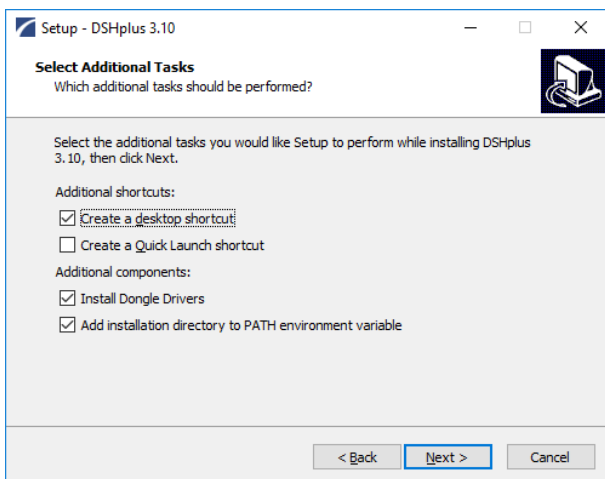


Select "Full Installation" (recommended)

Select Start Menu Folder



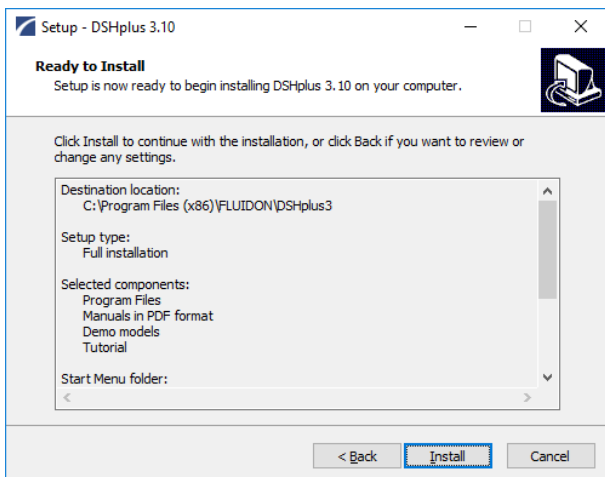
Select Additional Tasks



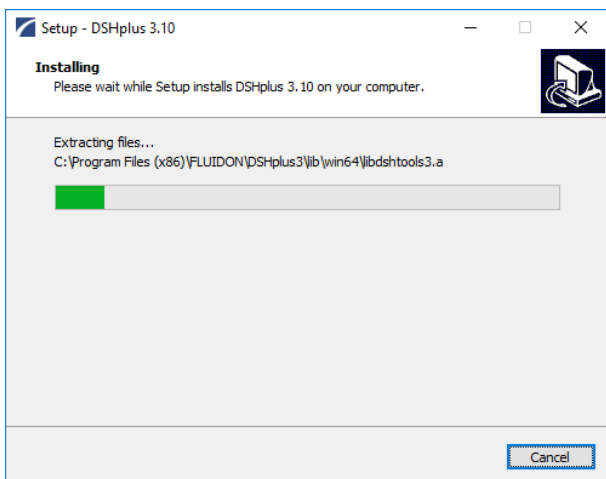
For Altair GWU usage the dongle drivers are not required.

The path environment variable is required for DSHplus-STC (model export).

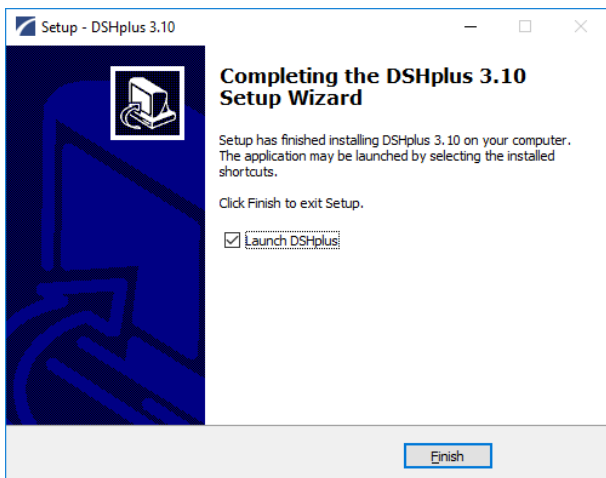
Ready to Install



Installing



Completing the DSHplus Setup Wizard

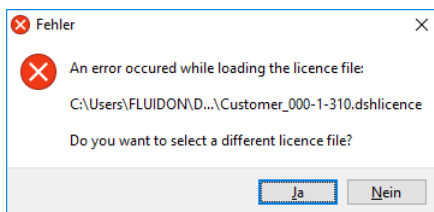


Licence Installation

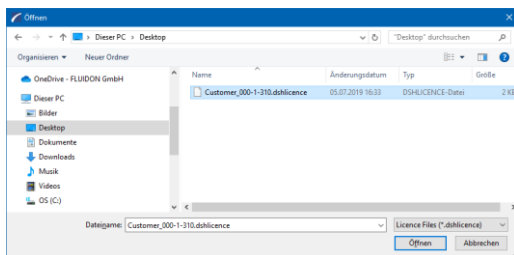
DSHplus uses a combination of a licence file and a validation method. This method can be either a local dongle, a network dongle, an Altair licence server, or a MAC-Address.

If you are using a local validation method (dongle or MAC), you just have to assign the licence file at first start of DSHplus (1.). In other cases you either have to install once a dongle licence server (2.) or assign an Altair licence (3.) before assigning the licence file.

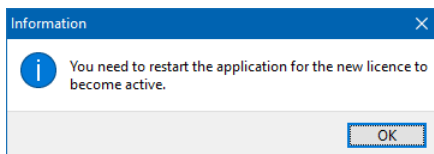
1. Assigning the DSHplus licence file for the first time
 - a. DSHplus searches automatically for a licence file.
If a licence file cannot be found it has to be selected by the user.



- b. Licence file selection



- c. Application restart



Assigning a DSHplus Network Licence Installation

d. Installation of the server

You need to install the proper CRYPTO-BOX device drivers, to have access to CRYPTO-BOX. For installation of the device drivers independent of DSHplus installation see chapter "Installing Dongle Drivers Manually".

- The installation files can be found in the CD folder "Tools\Dongle Server".
- Place server kernel (CBNETSRV.SRV) and launcher (CBNETSRV.EXE) file into the same directory on your hard drive (for example C:\CBNETSRV). You should also have server configuration file (CBNETSRV.cfg) there.
- To start server automatically – you should add CBNETSRV.EXE to Start-up and restart computer. To do it manually – you should simply launch CBNETSRV.EXE.
- To start server as a service – you should activate CBNETSRV.EXE dialog window, stop the server and check "Run as service" box. Then you can start server manually and logoff or restart computer without logging in. NOTE: You must have administrator rights to change server run mode.

If server application was launched the proper icon will appear on the system start bar. By double-clicking on this icon you can activate CBNETSRV dialog to see log file and to start/stop the server. By right mouse click you can start/stop/exit the server.

e. Local modification

You have to update the server configuration file (**CbNetConfig.cfg**) that can be found in the DSHplus root directory. The settings should be the same as in CBNETSRV.cfg, in addition you should set the IP-address of the dongle server.

f. Configuring

Server could be configured in a three ways (they are listed from lowest priority to highest):

- default parameter settings
- settings, reassigned by values obtained from the configuration file (CFG file)
- settings, reassigned by values specified in the command line.

The following parameters are supported:

- DebugLevel=<n> - specifies the level of debug information that will be added to debug log file (CBNETSRV.DBG)

Level 0 – critical errors (default)
Level 1 – warnings
Level 2 – general information

Level 3 – debug information

Level 4 – dump all events

- `LogLevel=<n>` - specifies the level of information that will be added to log file (CBNETSRV.LOG)

Level 0 – main events and login errors

Level 1 – user logins and errors (default)

Level 2 – log all events

- `AdminPassword=<value>` - specifies ID and password for administrative access
- `KeepAliveTimeout=<n>` - specifies client keep-alive timeout in seconds (360 – by default; it should be at least 60 !!!)

The configuration parameters should be stored in the CBNETSRV.CFG file.

To set parameters in the command line do the following:

`CBNETSRV.EXE -DebugLevel=3` (for example)

g. Log information

The server log information is saved in two files:

- CBNETSRV.LOG – general log information, also output to console;
- CBNETSRV.DBG. – debug level log, information (defined with `DebugLevel` parameter).

h. Administering MARX CBNET Server via HTTP

The server could be remotely administered via HTTP–browser. For this purpose you should have TCP/IP support on server and client (remote administrator) computer. You can use Internet Explorer or Netscape Communicator (or any other browser) to connect to server.

`http://xxx.xxx.xxx.xxx:8765`, where `xxx.xxx.xxx.xxx` is the IP address of the server and 8765 is the default `TCP_Dta_Port`.

For administrative login you should specify login name and password (default – `admin:cbnetserver`), stored in `AdminPassword` parameter.

The main administrative functions allow administrator to:

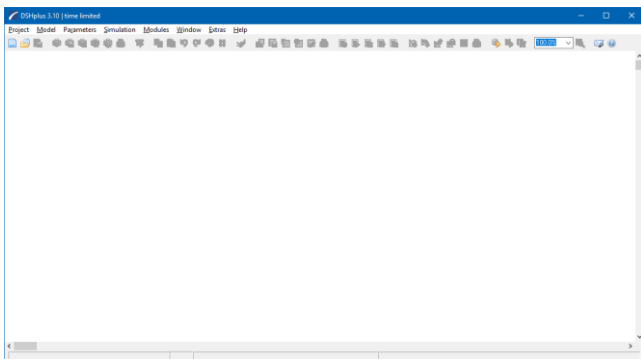
- view server OS/CBNET version info
- view connected clients (users) list
- disconnect any client (user)
- view attached CRYPTO-BOX list

- restart or shutdown server

You also can view the server log information, which corresponds to information, output to server console and stored in CBNETSRV.LOG.

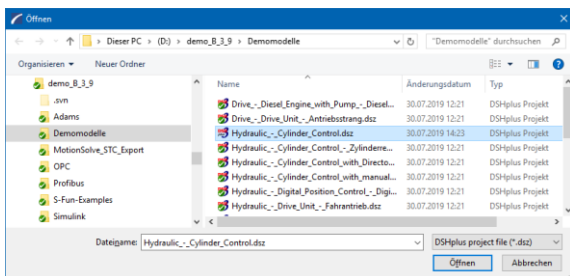
Quick Check whether the Installation was Successful

1. Start DSHplus



Starting DSHplus first time after installation, it takes some seconds until the program window opens

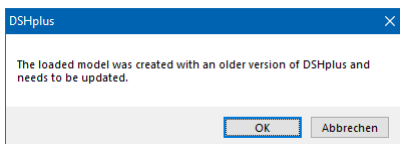
Open a Demo Project



Select one of the DSHplus Demo Models.

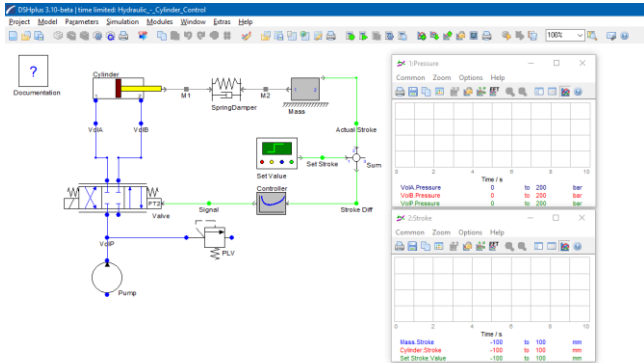
Re-create the Model.

If a DSHplus model is older of date than the DSHplus installation, the system suggests the re-creation of the model. Please select "Ok" to do so.

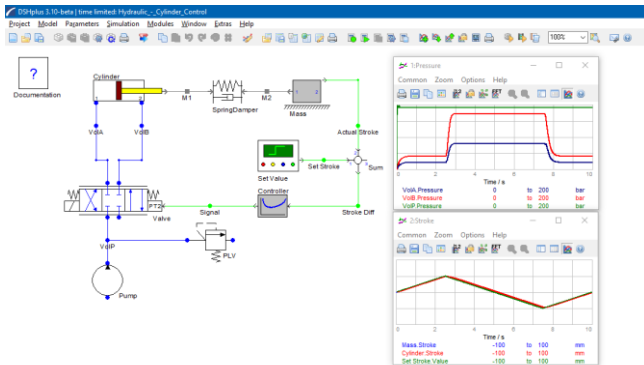


Start a Simulation

If the result of the re-creation looks like the picture below, everything is all right. All relevant program modules are installed correctly.



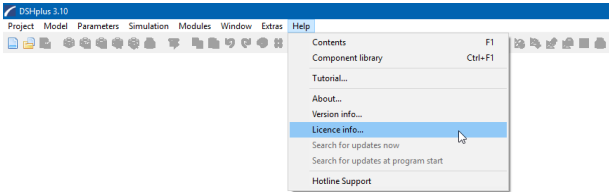
Click on the calculator button with the green dot to start the simulation.



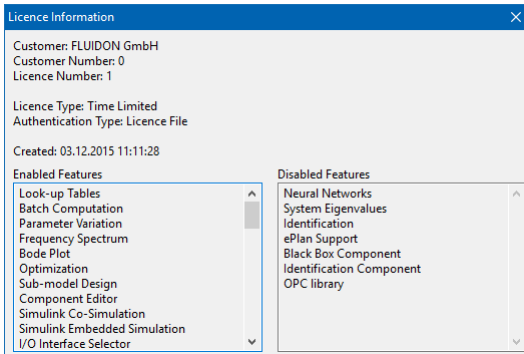
If there are curves appearing in the online graphic, everything is OK and DSHplus is ready for work.

Checking the Licence Content

1. Open the Licence Information Dialog



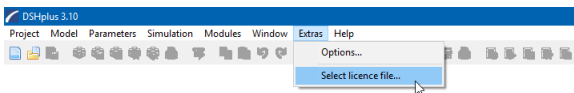
Licence Information



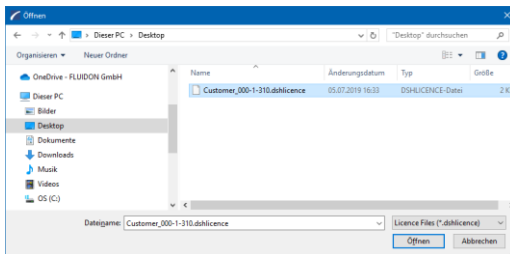
Available features are listed on the left side

Changing the Licence File

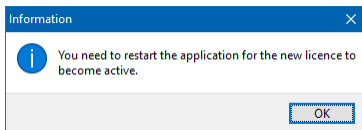
1. Open the Select Licence Dialog



Select new Licence File



Restart DSHplus



Installing Dongle Drivers Manually

Overview

The CBSetup.exe is a setup that performs automatic installation of CRYPTO-BOX related components depending of the operating system. The installer is a self-extracting tool which contains all files needed to support CRYPTO-BOX USB (Versa, XS, XL), CRYPTO-BOX Parallel (560/Net and Versa), CRYPTO-BOX Serial and is thus self-sufficient.

After the setup completes installation there is no need to reboot because the drivers are loaded and started right away.

Operating System Supported

The following operating systems are supported by CBSetup:

- Windows® 10 (32/64bit, 64bit for CRYPTO-BOX USB only)
- Windows® 7 (32/64bit, 64bit for CRYPTO-BOX USB only)
- Windows® Vista (32/64bit, 64bit for CRYPTO-BOX USB only)
- Windows® XP and XP x64 (XP x64 for CRYPTO-BOX USB only)

The installation file can be found in the CD folder "Tools\Dongle\Device Drivers".

